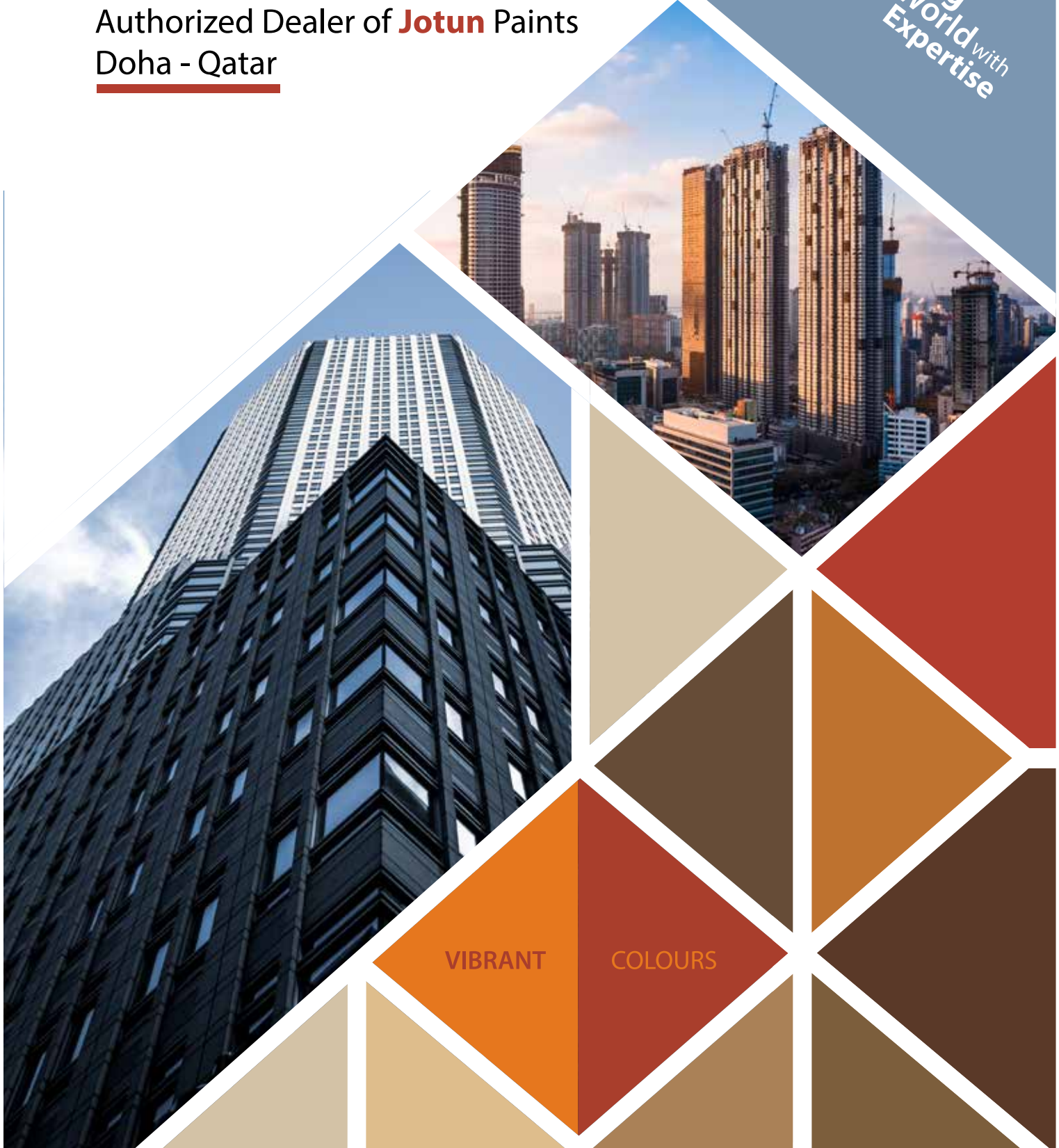




Lulu PAINTS CENTER

Authorized Dealer of **Jotun** Paints
Doha - Qatar

Coloring
Your World ^{with}
Expertise



VIBRANT

COLOURS

COMPANY PROFILE

ABOUT US

Welcome to Colorful Creations, your trusted partner in all things paint. As an authorized dealer of Jotun, we are committed to bringing you the highest quality paint products and services. Established in 1990, our shop has been serving the community of Doha for nearly three decades.

We pride ourselves on our extensive knowledge of paint products and our dedication to customer service. Our team of experts is always ready to provide advice and guidance, helping you choose the perfect Jotun products for your needs.

At Colorful Creations, we understand that the right paint can transform a space. That's why we offer a wide range of Jotun products, from interior and exterior paints to coatings for industrial and marine use. Whether you're a professional contractor or a DIY enthusiast, we have the products and tools you need to bring your vision to life.

We invite you to visit our store and explore the world of color with Jotun and Colorful Creations. Let's create something beautiful together.

For over 30 years, **Splendid Organizer** has been committed to creating exceptional event outcomes. Our team achieves this by embedding awe inspiring features in all our creations, even in the highest pressure and time sensitive situations.

To us, it is vital that we treat every client with the highest dedication and responsibility. This mentality has built strong relationships with our client, many utilising our services continuously over the years. Our clients continue to display this confidence in us via their strong recommendations and loyalty.

Ceo Message

CREATIVE TEAM



SAITHALAVI
MANAGING DIRECTOR



MOHAMMED
ADMINISTRATOR



MUHAMMED SUHAIL
MANAGER

MISSION

Our mission is to color the world with our **Premium Paints**, enhancing the beauty of spaces while ensuring sustainability and environmental responsibility.

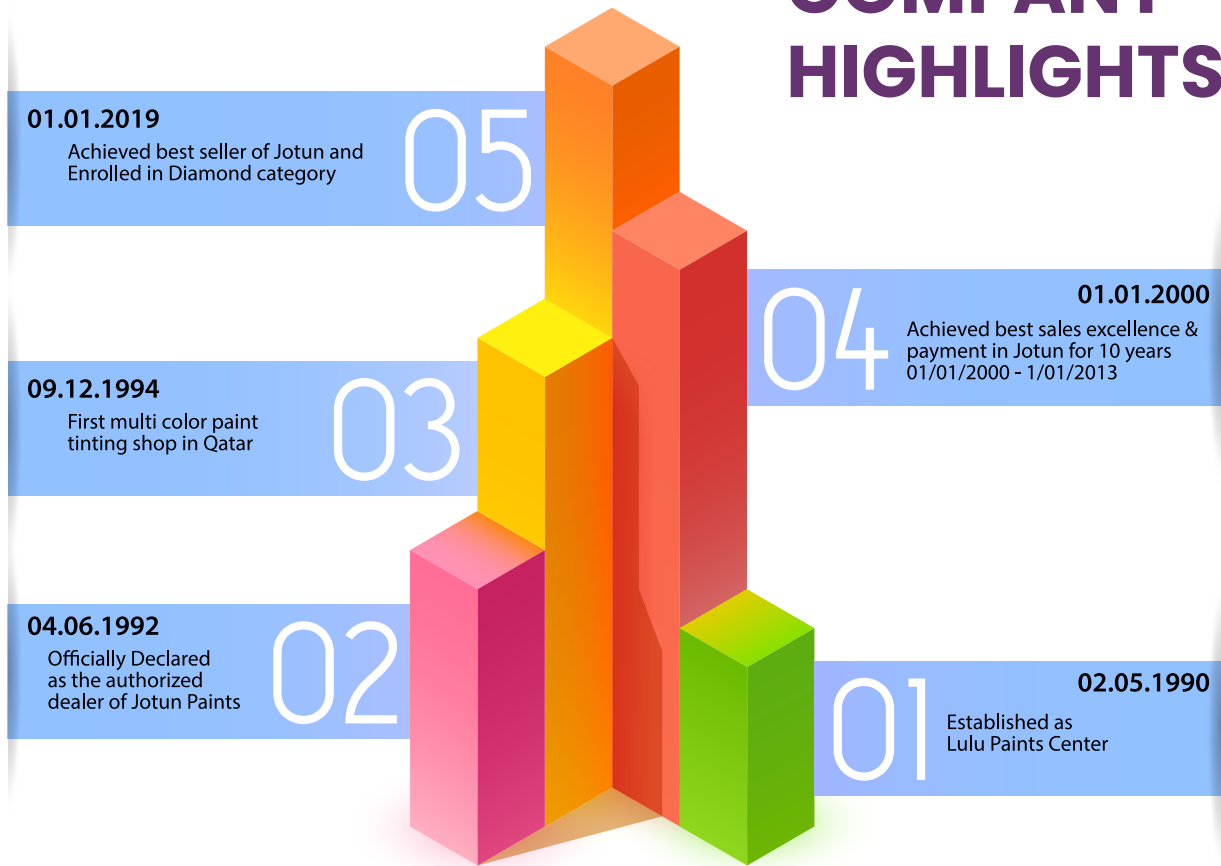
VISION

We envision a world where every space tells a vibrant story through color, We aim to be the preferred choice for customers seeking quality paints, offering a palette of possibilities that inspire creativity and transformation.

VALUE

- **Quality:** We are committed to providing high-quality paints that deliver excellent coverage and durability.
- **Innovation:** We continuously strive to innovate, offering a wide range of colors and finishes to cater to diverse customer needs.
- **Sustainability:** We believe in doing business responsibly, offering eco-friendly paints that minimize environmental impact.
- **Customer Satisfaction:** We place our customers at the heart of everything we do, ensuring exceptional service and support.

COMPANY HIGHLIGHTS



Company Growth History



AWARDS & RECOGNITION

Decorative Segment

- Best in Payment & Sales in 2014
- Best in Payment & Sales in 2015
- Best in Payment & Sales in 2016
- Business & Sales Excellence - 2017
- Diamond Category 2018
- Platinum Category 2019
- Platinum Category 2020
- Platinum Category 2021
- Diamond Category 2022
- Diamond Category 2023

Protective

- Best in Sales & Growth - 2019
- Best in Sales & Growth - 2020
- Best in Sales & Growth - 2021
- Best in Sales & Growth - 2022
- Best in Sales & Growth - 2023



LULU PAINTS CENTER SERVICES & SOLUTIONS

At Lulu paints center, we don't just sell paints - we craft experiences. As a proud Jotun Multicolor Centre, we blend creativity with precision to transform spaces and bring your vision to life.

Our Palette of Services:

- **Color Consultation**

Step into our world of infinite hues. Our expert color consultants will guide you through a spectrum of possibilities helping you to find the perfect shade that speaks to your style and enhances your space.

- **Paint Mixing Mastery**

Witness the alchemy of color as our state-of-the-art mixing technology creates your perfect hue. Whether you're matching an existing shade or creating something entirely new, we ensure precision in every drop.

- **Decorative Finishes**

Elevate your surfaces with our range of decorative finishes. From subtle textures to bold statements. We offer techniques that add depth and character to any room.

- **Protective and Marine Solutions**

We understand that some environments demand more than just color. Our protective and marine coatings offer durability and resilience, standing strong against the harshest conditions.

- **Eco-Friendly Options**

Paint with a conscience, Our selection of eco-friendly paints allows you to beautify your space while caring for the environment.

Why Choose Lulu Paints Center?

- Expertise:* Our team of color specialists brings years of experience to every project.
Quality: As a Jotun Multicolor Centre. We offer only the highest quality products.
Versatility: From residential charm to industrial strength, we cater to all your painting needs.
Customer-Centric: Your vision is our mission. We work closely with you to achieve the perfect result

Our Commitment:


Whether you're a contractor seeking reliable solutions, an interior designer in pursuit of the perfect palette, a homeowner dreaming of a fresh look, or part of the oil and gas industry requiring robust protective coatings - we're here to exceed your expectations.

"Color is a power which directly influences the soul" - Wassily Kandinsky

At Lulu paints Center, we don't just understand this power; we harness it to transform your spaces. Ready to add some color to your life? Contact us today and let's paint your world beautiful



PROJECTS

-  122 Villa at Yasmin City
-  R 53 Arkiya
-  Qatar University
-  Doha Bank at C Ring Road



OUR MAJOR CLIENTS

-  Larsen & Toubro
-  Qatar Airways
-  Badr Contracting
-  Boom General Contractors
-  Shelter Qatar
-  Qatar Infrastructure Company
-  Electra
-  Sigma Metal Industries



A TRULY GLOBAL PLAYER TODAY

We are a global paint and coating solutions company, established in Sandefjord, Norway in 1926.

With more than 90 years in paints and coating industry we have always been a partner for all your projects, from concept to completion and beyond

At Jotun, we protect property by providing solutions that not only enhance the appearance of your asset but also ensures long lasting durability.



40

Production Facilities



100

Countries



7

Research and Development Centers



10,000

Employees





VALUES

Their four values Loyalty, Care, Respect and Boldness are the solid building blocks of their Penguin Spirit



Loyalty

- Reliable and trustworthy.
- Long term relationship between customers, Jotun and colleagues.
- Commitment to Jotun's values, strategies, policies & decisions.



Care

- Help and support others.
- Display trust and empathy.
- Appraise and judge fairly.
- Protect internal and external environment.

Respect



- Value differences in people.
- Be honest and fair.
- Build diverse teams across culture and gender. Follow laws and regulations.
- Treat others the way they expect to be treated.



Boldness

- Take initiatives to create the future.
- Initiate and nurture change.
- Communicate openly, honestly and with integrity.
- Be proactive.
- Address difficulties constructively.

Business Ethics and Integrity

Every year, the business world becomes more competitive, meaning that companies need to operate more efficiently and effectively. In this framework, Jotun believes that integrity is more important than ever. That's why they place responsible attitudes and ethics at the heart of the way they run their operations.

Anti - corruption:

- Jotun works actively against corruption. As a global, responsible player, Jotun takes part in the combat against corruption.
- Corruption and bribery are threats to economic development, global poverty and our integrity and they owe it to their customers, the local communities, their shareholders and their employees, to maintain high ethical standards.
- At Jotun they believe that openness, discussion and training is the best way of creating the right attitudes. In addition to rules and guidelines for behavior, Jotun therefore puts great emphasis on practical training. Only when their employees have discussed things openly and trained in how to act when facing a dilemma, can the right and sound business decision can be made.
- Jotun works actively against corruption!



PRODUCTS

01 Decorative Segment

- Fenomastic
- Jotashield
- Easycoat
- Durosan
- Lady Design



02 Protective Segment

- Floor Coating
- Protective coating for Metal & Concrete



03 Marine & Yacht Paints

- Yacht & Fiber Boats
- Cruise Ship & Container Ship



GRAND
Opening
Ceremony



Hato Paint Company (JKR) The company has continuously implemented and developed products in striving to produce products of the highest quality to create leading architectural works. With confidence in quality, we have a wide range of products to choose from that can meet a variety of applications.



Hato Gold Products

- BJ-9009
- AG-123
- BJ-8008



สีทองฮาโต้

hato

GOLD

GOLD GRADE

1 ปี

10 ปี

10 ปี

Extra Radiant Glow

Extra Spreading Rate

ROYAL PREMIUM GRADE
SUPER PREMIUM GRADE
PREMIUM GRADE

PRODUCTS WE DEALS







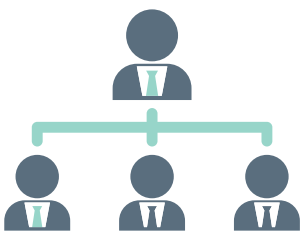












Managing Director - E. V. Saithalavi
Administrator - E. V. Mohamed Kutty
Sales Manager - Mohamed Musthafa
Accountant - Mohamed Suhail
Procurement controller - Dilshar & Nabeel
Asst Accountant - Maazi
Store Manager - Mohamed Musthafa
Operational Manager - Faisal
Technicians - Kamaru, Ali & Ahmad
Salesman - Sultan, Shafi & Ajmal
Labour - Karim, Hashir, Ameen
Driver - Jaffar



مركز اللؤلؤه للأصباغ

Lulu PAINTS CENTER

Decorative, Industrial and Marine Paints



Al Mansoura Main Road
P.O. Box: 14061, Doha Qatar



+974 5583 2039



+974 4443 2805
+974 4431 6778
+974 3319 5556



lulupaintsc@gmail.com
www.lulupaintscenter.com